



Carpentier-Edwards S.A.V. Bioprosthesis

Edwards Lifesciences has dedicated more than three decades to creating the most durable porcine tissue valves in the world. Which is why our aortic and mitral Edwards S.A.V. valves provide excellent durability through advances such as new tissue processing technology, design enhancements and proven performance.

Our S.A.V. valves feature:

- **New Patented Edwards XenoLogiX Treatment**

- Significantly reduced calcification in rat and sheep implant studies.^{1,2*}

- **Low-pressure Fixation Technology**

- The Edwards process that has set the industry standard.
- Preserves natural leaflet architecture to help maintain flexibility.

- **Supra-annular Design**

- In the aortic position, yields an orifice area comparable to the patient's annulus, improving hemodynamic performance.

- **Low-profile Design**

- Provides unobstructed blood flow through the coronaries in the aortic position.
- Reduces ventricular protrusion in the mitral position.

- **Enhanced Design**

- Unique scalloped sewing ring is designed for anatomical fit and ease of implant in the aortic position.
- Flexible Elgiloy stent reduces loading shock on critical areas of the tissue.

- **Proven Durability**

- Fifteen-year patient data demonstrates long-term performance.

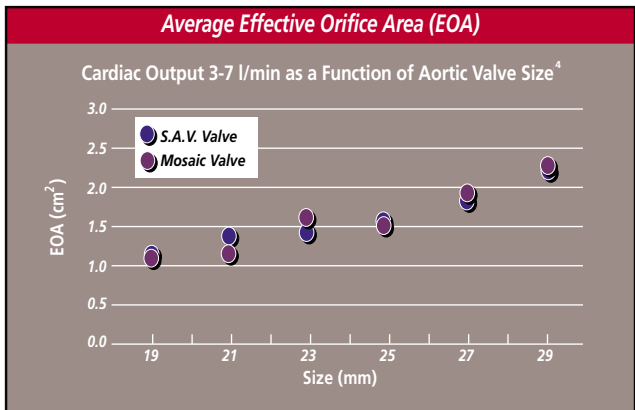
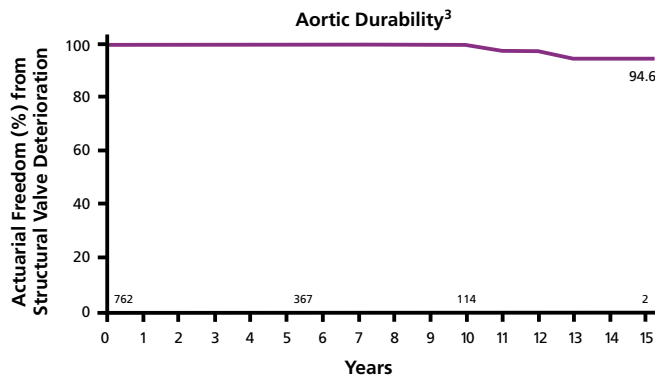


Edwards
LIFESCIENCES

*No clinical data are available which evaluate the long-term impact of the XenoLogiX treatment in patients.

Carpentier-Edwards S.A.V. Bioprosthesis Models 2650 and 6650

Freedom from structural valve deterioration after aortic valve replacement. (Patients 70+ years)



Aortic Sizer – Model 1166



Edwards TRUE-SIZE Mitral Sizer – Model 1162



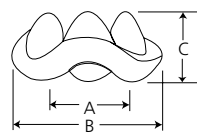
Reusable Handle – Model 1111



Longer Single-use Handle – Model 1126

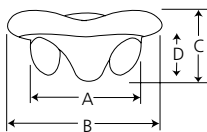
Specifications

Significant dimensions in millimeters (nominal values)



Model 2650 Aortic**

A. Mounting Diameter (Size) (Annulus)	19	21	23	25	27	29	31
B. External Diameter (Size)	25	28	30	32	34	36	38
C. Profile Height	14	15	16	17	17	18	19



Model 6650 Mitral†

A. Mounting Diameter (Size) (Annulus)	25	27	29	31	33
B. External Diameter (Size)	33	35	37	39	42
C. Profile Height	17	17	18	20	21
D. Ventricular Projection	12	13	13	13	13

References

1. Cunanan C, et al. Tissue characterization and calcification potential of commercial bioprosthetic heart valves. *Ann Thorac Surg* 2001; 71:S417-21.
 2. Data on file at Edwards Lifesciences.
 3. Jamieson WRE, et al. Carpentier-Edwards Standard and Supraannular Porcine Bioprostheses: Comparison of Technology. *Ann Thorac Surg* 1999; 67:10-7.
 4. Marquez S, et al. "Comparative Hydrodynamic Evaluation of Bioprosthetic Heart Valves," *J Heart Valve Dis* 2001;10:802-811.
- ** Aortic sizes 19, 29 and 31mm available outside the U.S. only.
† Available outside the U.S. only.



Certified according to European MDD

See instructions for use for full prescribing information.

Edwards Lifesciences, Edwards, the stylized E logo, S.A.V., Carpentier-Edwards S.A.V., TRUE-SIZE and XenoLogiX are trademarks of Edwards Lifesciences Corporation. Carpentier-Edwards is a trademark of Edwards Lifesciences Corporation and is registered in the U.S. Patent and Trademark Office. Mosaic is a trademark of Medtronic, Inc. Elgiloy is a trademark of Elgiloy Limited Partnership.

Caution: Federal (USA) law restricts this device to sale by or on the order of a physician.

© 2002 Edwards Lifesciences LLC.
All rights reserved. 3332-7/02-HVT



Edwards Lifesciences